



# 3910 Sandhill Crescent "Paris" 1484 SQ.FT.

3231 Eastgate Drive  
Regina, Saskatchewan

OFFICE: 306.525.2329

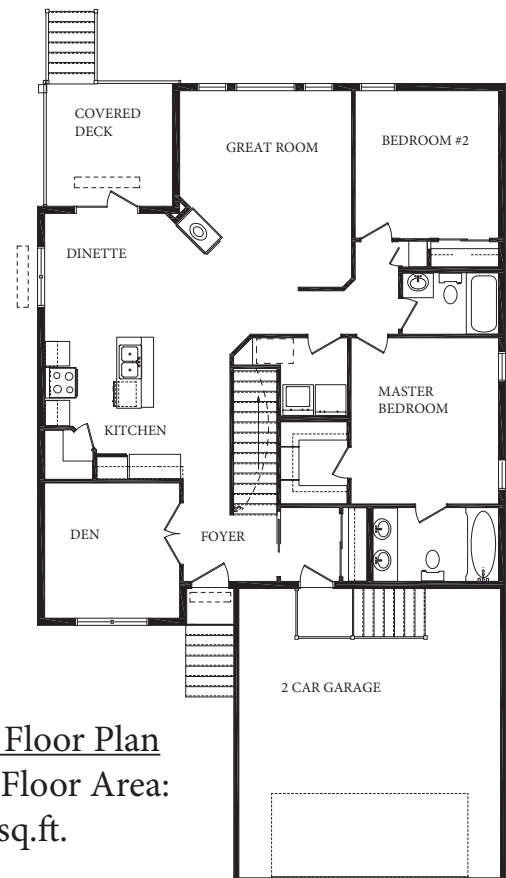
WEBSITE: VARSITYHOMES.CA



Note: Illustration is the artists concepts. Rendering not to be used for construction purposes.

## FEATURES

- ~ LARGE DEN AT FRONT OF HOUSE
- ~ SPACIOUS LIVING ROOM WITH THREE SIDED GAS FIREPLACE
- ~ LARGE KITCHEN WITH WALK IN PANTRY
- ~ MASTER BEDROOM WITH WALK IN CLOSET
- ~ ENSUITE WITH DOUBLE SINKS AND JET TUB
- ~ DINETTE OPENS ONTO COVERED DECK
- ~ MAIN FLOOR LAUNDRY ROOM
- ~ TWO CAR GARAGE



Main Floor Plan  
Total Floor Area:  
1484 sq.ft.

This plan is published by Varsity Homes Ltd., Regina, Saskatchewan, Canada.  
Dimensions are subject to change without notice. All rights reserved.  
Reproduction in whole, in part, or in any form with permission of the publisher only